

PLANTA DE COBERTURA
ESCALA: 1/75



PREFEITURA MUNICIPAL DE SÃO JOSÉ DOS AUSENTES - RS

DISCRIMINAÇÃO

Casas Populares
São José dos Ausentes

PRANCHA

1/3

PREFEITO MUNICIPAL

Ernesto Boeira

RESPONSÁVEL TÉCNICO PROJETO

Engenheiro Civil Guilherme de Camargo Boeira CREA-SC 159421-1

ESCALA

Indicada

DATA

24/05/2023

ASSUNTO

Projeto de casas populares.
Planta de cobertura, planta estrutural, planta baixa, cortes, fachadas e perspectivas.

ÁREA

40,00 m²

ARQUIVO

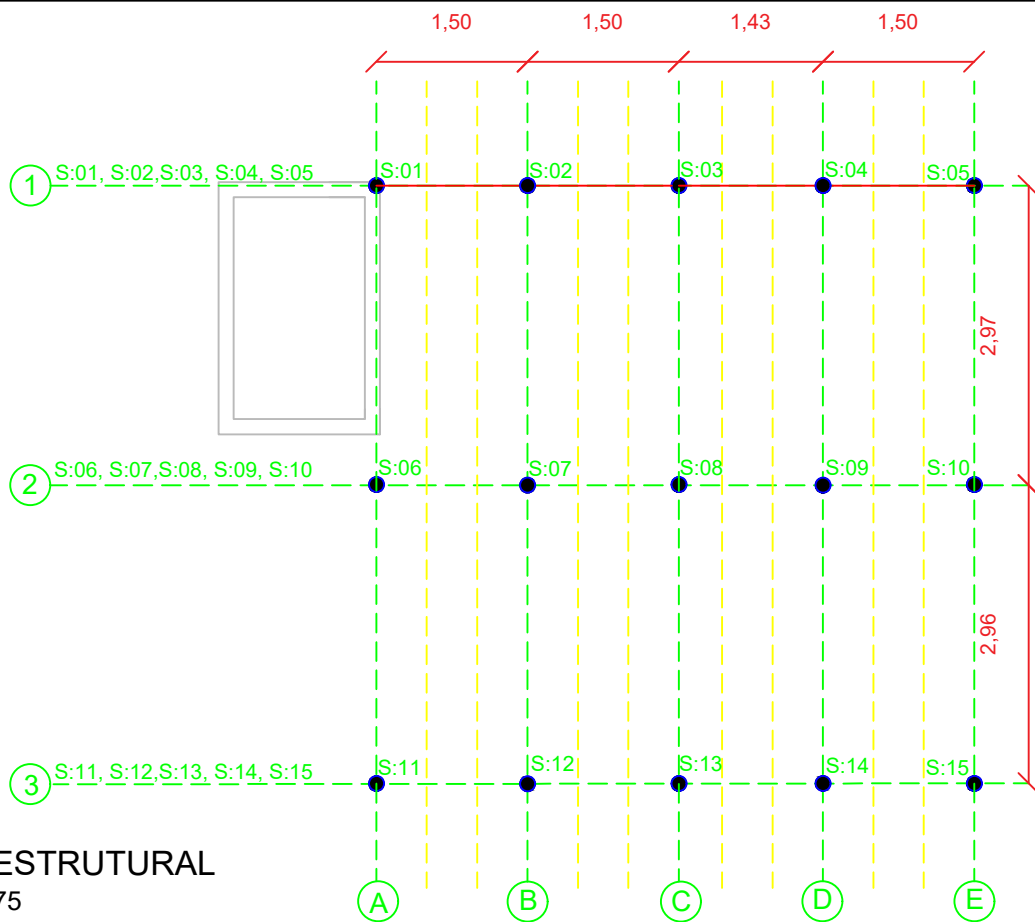
Casas_Populares.dwg

MODIFICAÇÃO

Contato: (54) 3698-5400

Ramal: 219

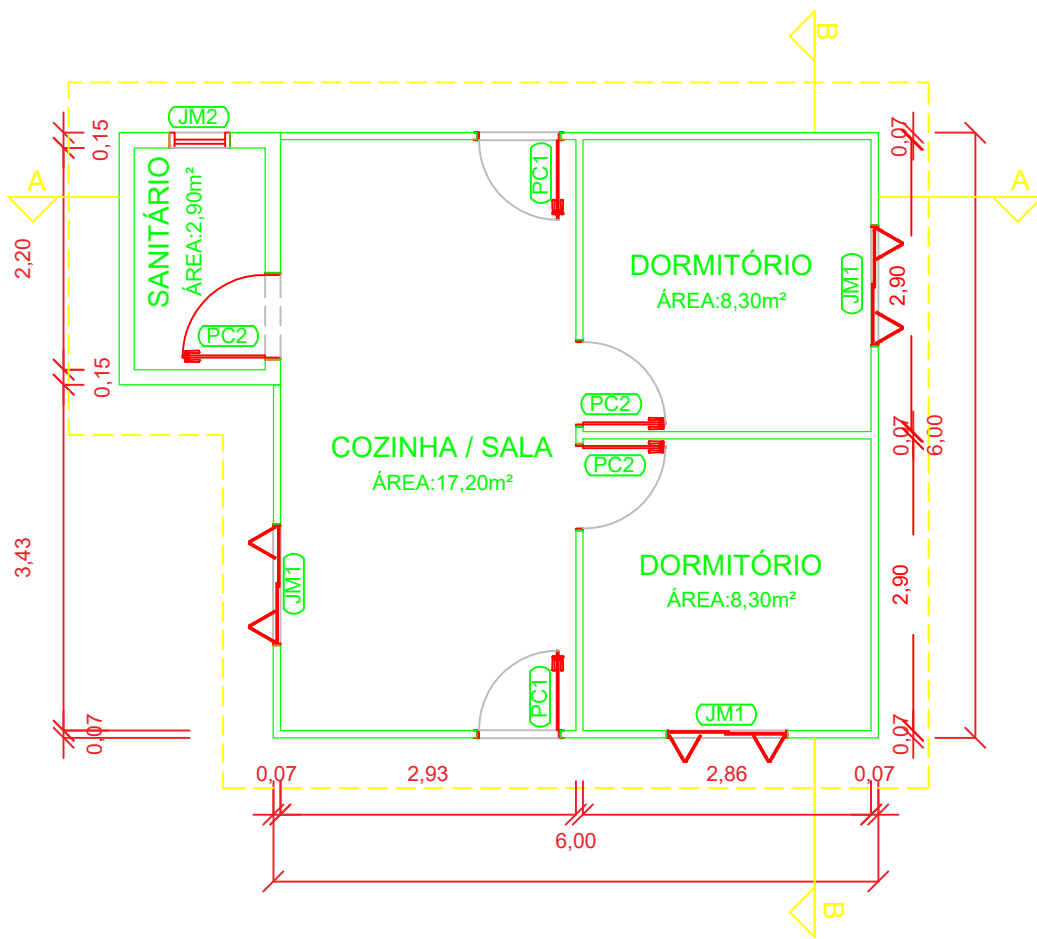
e-mail: planejamento@saojosedosausentes.rs.gov.br



PLANTA ESTRUTURAL
 ESCALA: 1/75

LEGENDA:

(JM1)	JANELA VENEZIANA (1,20X1,00/1,10)
(JM2)	JANELA MAXIM AR (0,60X0,60/1,50)
(PC1)	PORTA DE GIRO MACIÇA (0,80X2,10)
(PC2)	PORTA DE GIRO SEMI OCA (0,80X2,10)



PLANTA BAIXA
 ESCALA: 1/75

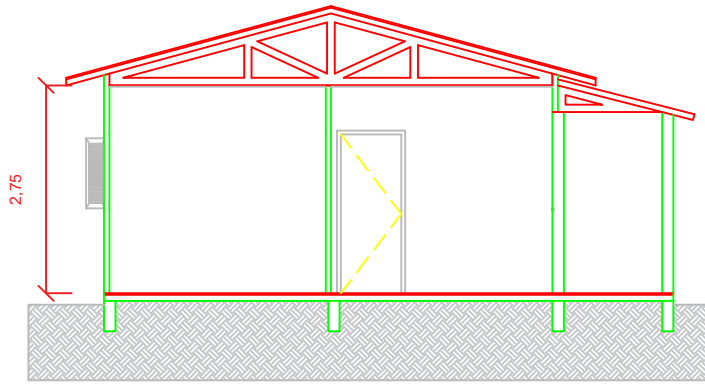


DISCRIMINAÇÃO

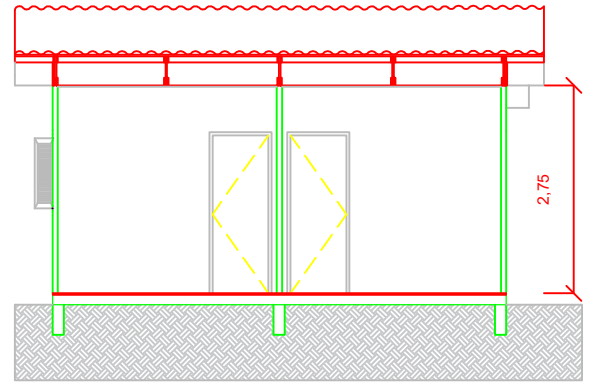
Casas Populares
 São José dos Ausentes

PRANCHA

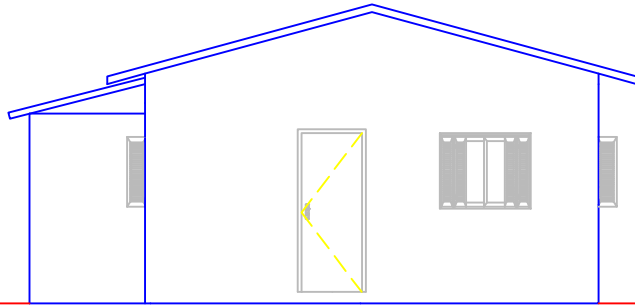
2/3



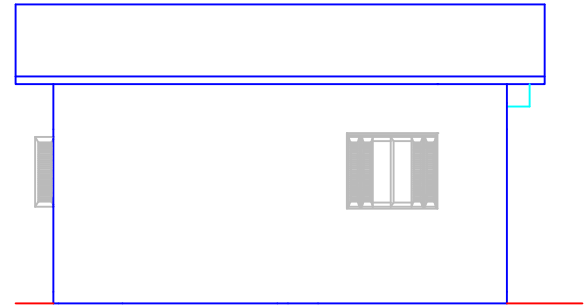
CORTE A-A
ESCALA: 1/100



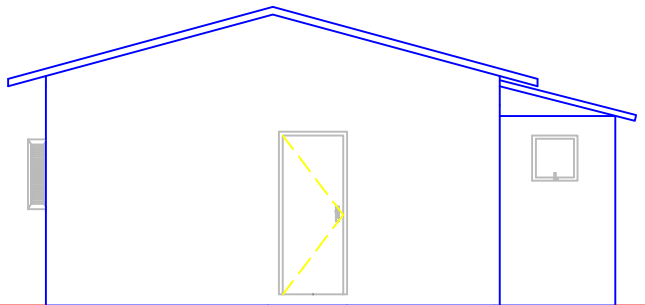
CORTE B-B
ESCALA: 1/100



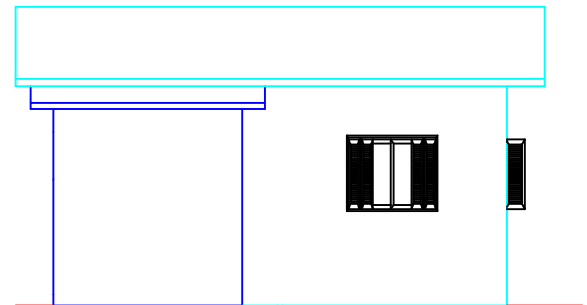
FACHADA 01
ESCALA: 1/100



FACHADA 02
ESCALA: 1/100



FACHADA 03
ESCALA: 1/100



FACHADA 04
ESCALA: 1/100



PERSPECTIVA 01
SEM ESCALA



PERSPECTIVA 02
SEM ESCALA



DISCRIMINAÇÃO

Casas Populares
São José dos Ausentes

PRANCHA

3/3